

Seating System Armrests IPB, International

This Illustrated Parts Breakdown (IPB) Catalog has been compiled from the latest product information available at the time of publication. Quantum Rehab® / Pride Mobility Products® Corporation reserves the right to make changes and updates to this manual and to the product(s) it represents. Any changes, updates, or improvements to the product(s) may result in slight differences between this manual and the product that has been purchased.

An IPB is a graphically portrayed parts listing of product components which have been deemed to have serviceable, maintenance significance. When applicable, IPBs utilize “exploded” illustrations that detail serviceable components and a corresponding itemized parts list of reference numbers, part numbers, descriptions, quantities, and any applicable pricing. Most product components are incorporated into assemblies and may not be available for replacement.

Serviceable components will be noted by a callout in the illustration that will correspond to a alphanumeric reference number in the parts list. Items may also be listed in the parts list by parent assemblies. In most cases when a parent assembly is listed, there will be child parts or sub-assemblies listed under that parent.

For example: The parent assembly reference number is A1 — A5. That part contains all of the items listed as and contained within A1, A2, A3, A4, & A5. As long as these subcomponents have a callout associated with them, they can be selected for replacement or quote.

Updates to the contents of an IPB will be made on a regular basis based upon applicable product changes and enhancements. This PDF catalog has been export from the Provider based service site. The most up to date parts look up tool and ordering application is located at: prideprovider.com. Please utilize this system to enhance your user experience. It is built with highly interactive materials that are set with relational properties that will facilitate easier part look-up, more accurate parts selection, notification of onhand part availability, and quick links to related documents and products.

We welcome all questions and comments regarding the Quantum Rehab® / Pride Mobility Products® Corporation IPB systems.

Any pricing that is included in Quantum Rehab® /Pride Mobility Products® Corporation IPBs is subject to change without prior notice.

Thank you for choosing products from Quantum Rehab® and Pride Mobility Products® Corporation.



2.2. HD Removeable Armrests

2.1. 8"-12" Height HD Removeable Armrests

8"-12", Left / Right, Flat Armpad, Bariatric	1
8"-12", Desk Left, Desk Right - HD Removable, Bariatric	3
8"-12", Desk Left, Full Right - HD Removable, Bariatric	5
8"-12", Full Left, Desk Right - HD Removable, Bariatric	7
8"-12", Full Left, Full Right - HD Removable, Bariatric	9

2.2. 10"-14" Height HD Removeable Armrests

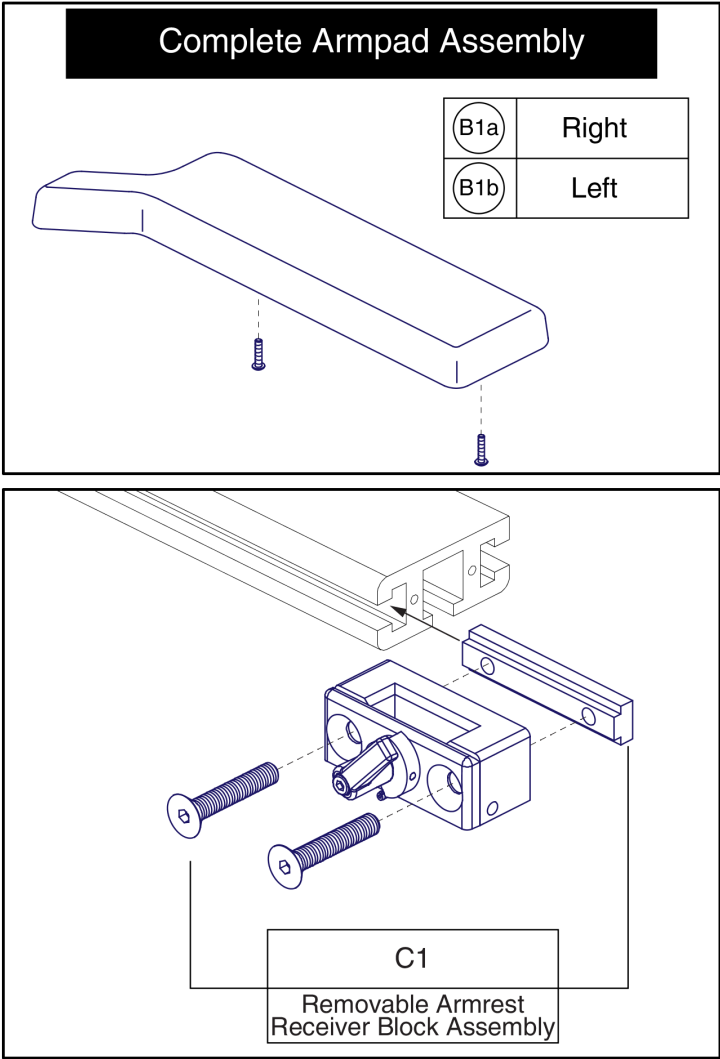
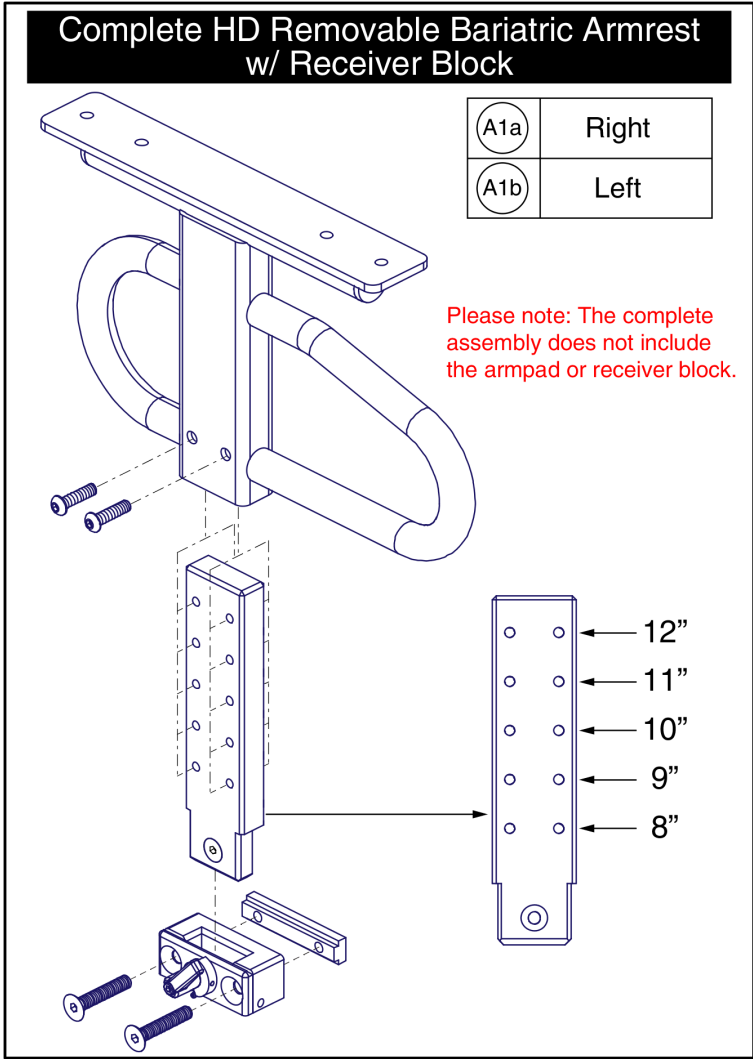
10"-14", Left / Right, Flat Armpad, Bariatric	11
10"-14", Desk Left, Desk Right - HD Removable, Bariatric	13
10"-14", Desk Left, Full Right - HD Removable, Bariatric	15
10"-14", Full Left, Desk Right - HD Removable, Bariatric	17
10"-14", Full Left, Full Right - HD Removable, Bariatric	19

Appendix A:Pages Index 21

Appendix B:Parts Index 22

2.1. 8"-12" Height HD Removeable Armrests

*** Individual components are not available for replacement. The entire assembly must be purchased. ***



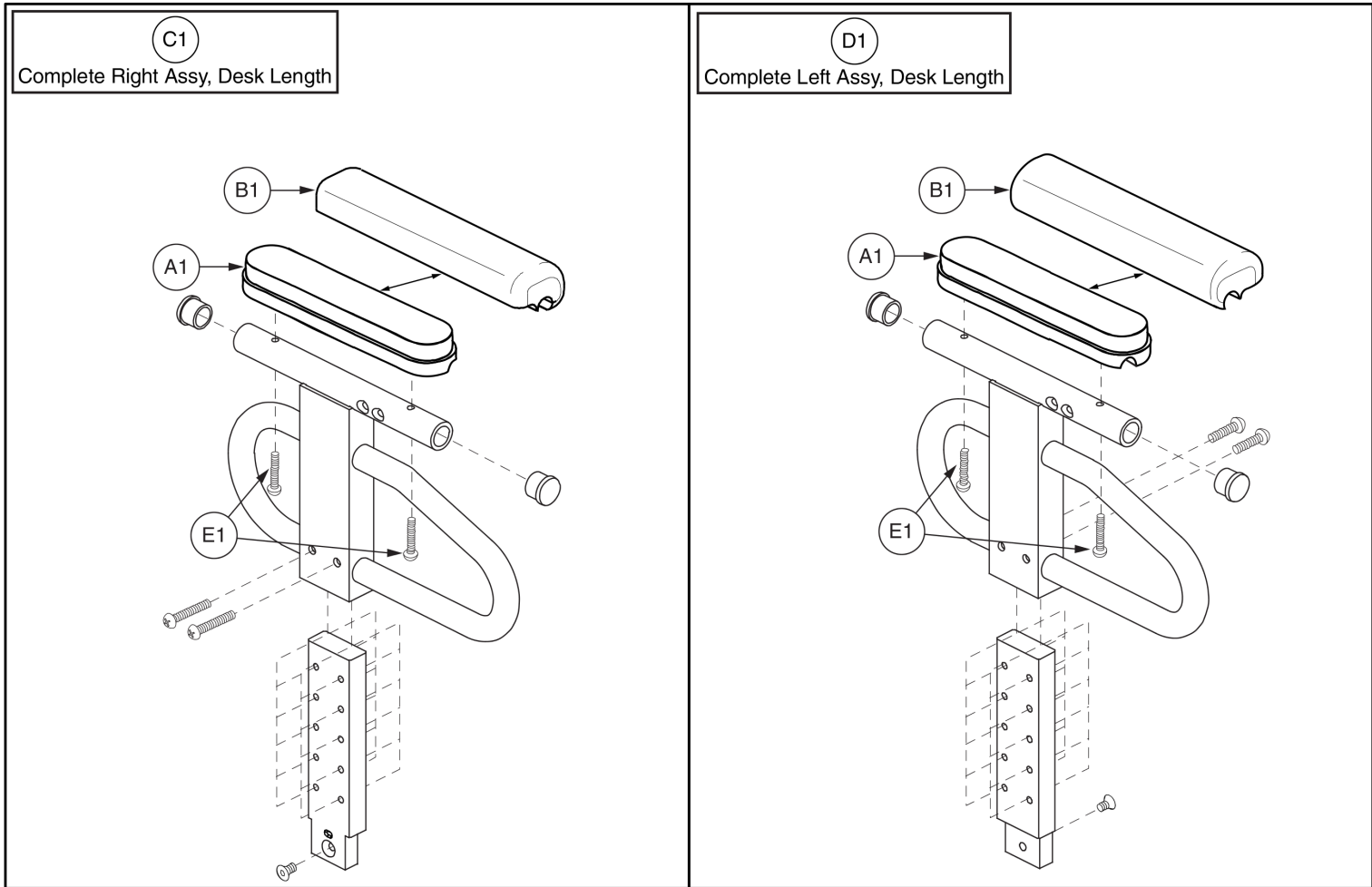
8"-12", Left / Right, Flat Armpad, Bariatric



Item	Part No.	Name	Qty
A1a	FRMASMB6729	ARMREST,ASSY,HD REMOVABLE,8"H-12"H,BARIATRIC,W/ARMPAD PLATE,RIGHT	1
A1b	FRMASMB6728	ARMREST,ASSY,HD REMOVABLE,8"H-12"H,BARIATRIC,W/ARMPAD PLATE,LEFT	1
B1a	UPSASMB1029	ARMPAD,ASSY,MOLDED,BLACK,BARIATRIC W/HARDWARE,RIGHT	1
B1b	UPSASMB1028	ARMPAD,ASSY,MOLDED,BLACK,BARIATRIC W/HARDWARE,LEFT	1
C1	FRMASMB6384	RECEIVER BLOCK,W/DIE CAST LEVER & STOP BLOCK,RIGHT/LEFT	1

2.1. 8"-12" Height HD Removeable Armrests

*** Individual components are not available for replacement. The entire assembly must be purchased. ***



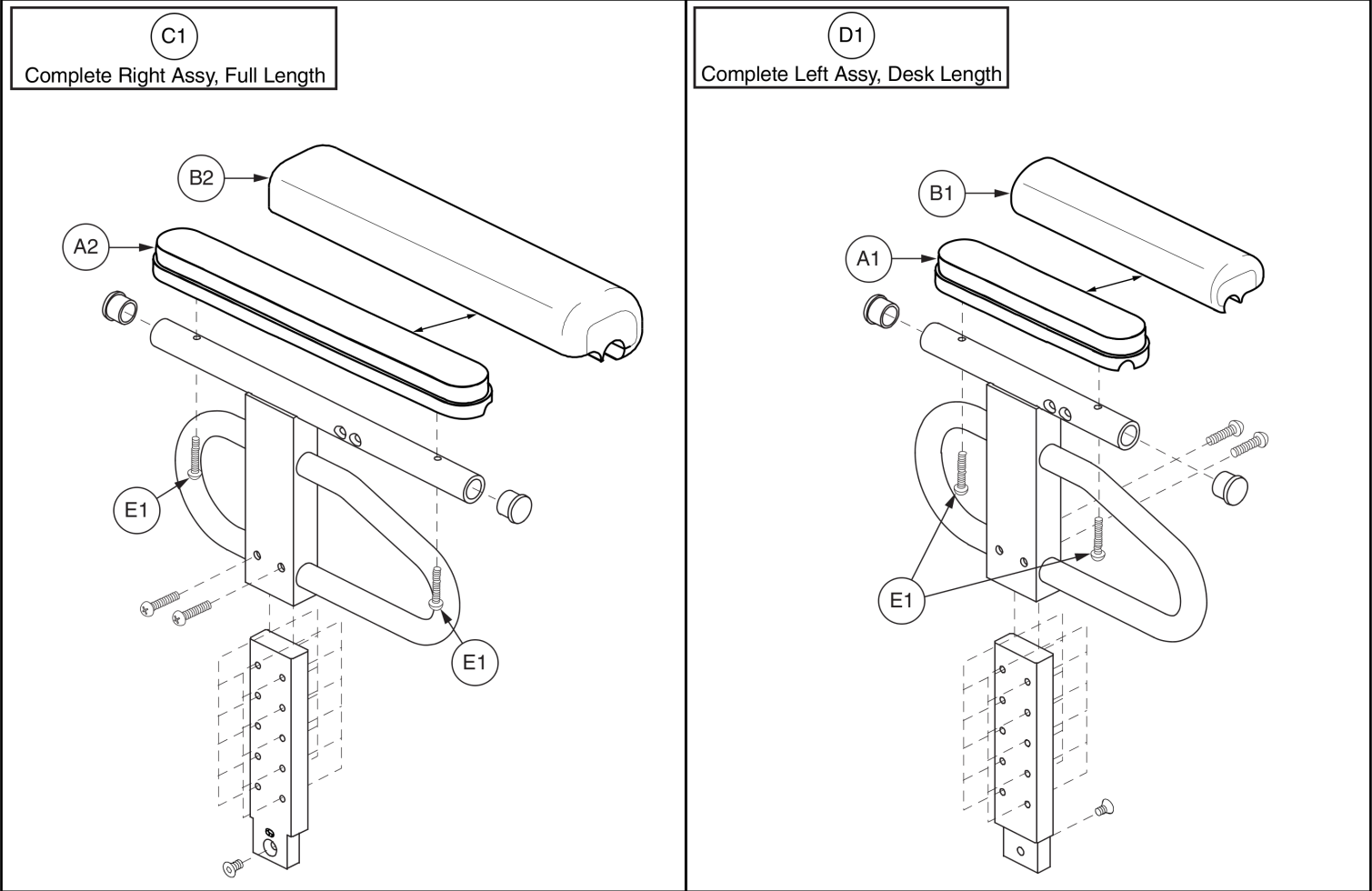
Complete Assemblies include the receiver block, they do not include the armpad.



Item	Part No.	Name	Qty
A1	SETLRAM1115	ARMREST,PAD,SHORT,QUANTUM,V2	1
B1	SETLRAM1164	ARMPAD,ASSY,WATERFALL,BLACK,9", DESK LENGTH	1
C1	FRMASMB9985	ARMREST,HD REMOVABLE,8"H-12"H,BARIATRIC,STEEL,DESK LENGTH,RIGHT	1
D1	FRMASMB9984	ARMREST,HD REMOVABLE,8"H-12"H,BARIATRIC,STEEL,DESK LENGTH,LEFT	1
E1	SCRASBH1053	SCREW,BHSCS,BLACK ZINC,10-32 X 1.25"	2
F1	FRMASMB6384	RECEIVER BLOCK,W/DIE CAST LEVER & STOP BLOCK,RIGHT/LEFT	1

2.1. 8"-12" Height HD Removeable Armrests

*** Individual components are not available for replacement. The entire assembly must be purchased. ***

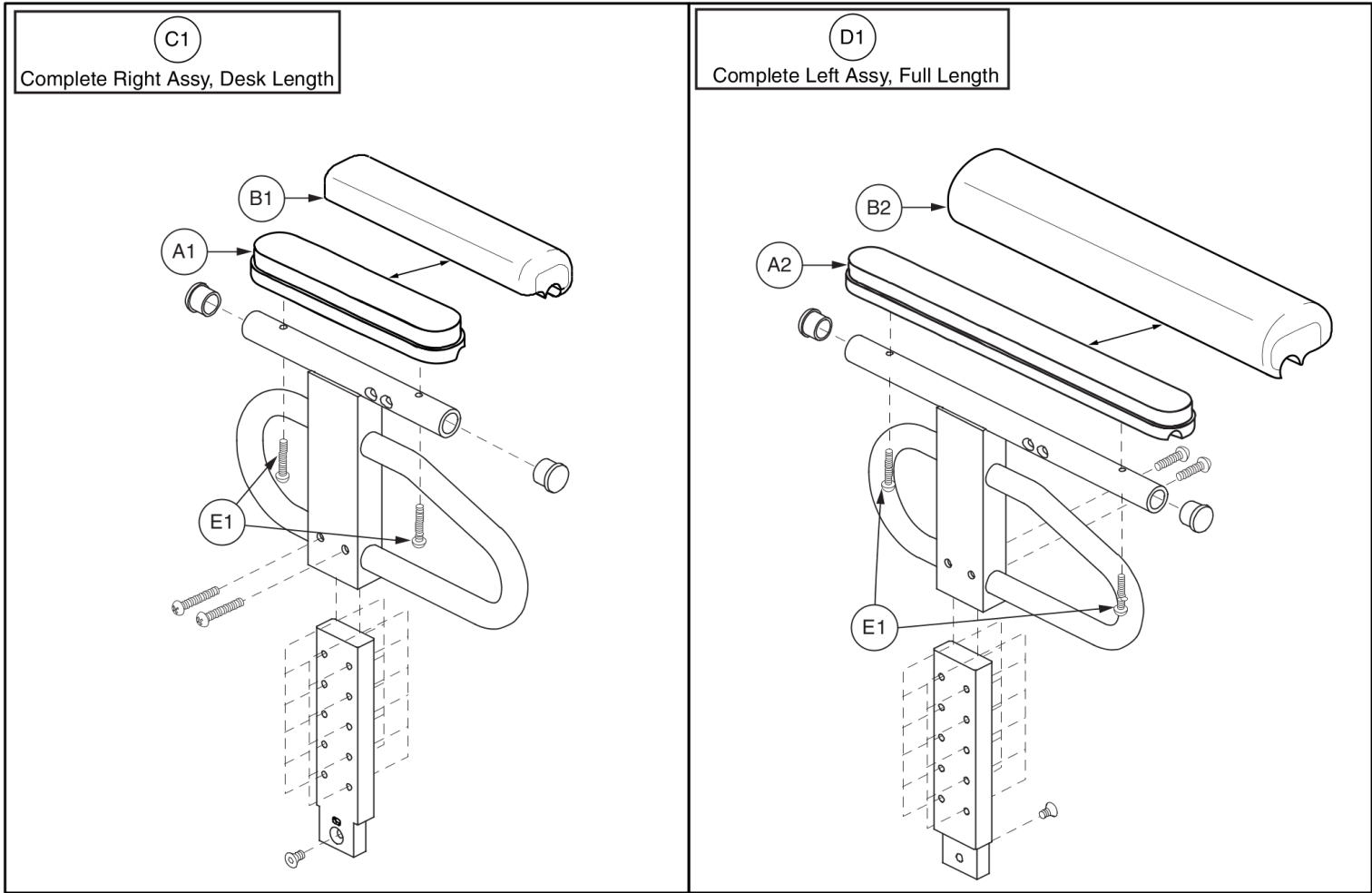


Complete Assemblies include the receiver block, they do not include the armpad.

Item	Part No.	Name	Qty
A1	SETLRAM1115	ARMREST,PAD,SHORT,QUANTUM,V2	1
A2	SETLRAM1116	ARMREST,PAD,LONG,QUANTUM,V2	1
B1	SETLRAM1164	ARMPAD,ASSY,WATERFALL,BLACK,9", DESK LENGTH	1
B2	SETLRAM1165	ARMPAD,ASSY,WATERFALL,BLACK,14", FULL LENGTH	1
C1	FRMASMB9983	ARMREST,HD REMOVABLE,8"H-12"H,BARIATRIC,STEEL,FULL LENGTH,RIGHT	1
D1	FRMASMB9984	ARMREST,HD REMOVABLE,8"H-12"H,BARIATRIC,STEEL,DESK LENGTH,LEFT	1
E1	SCRASBH1053	SCREW,BHSCS,BLACK ZINC,10-32 X 1.25"	2
F1	FRMASMB6384	RECEIVER BLOCK,W/DIE CAST LEVER & STOP BLOCK,RIGHT/LEFT	1

2.1. 8"-12" Height HD Removeable Armrests

*** Individual components are not available for replacement. The entire assembly must be purchased. ***

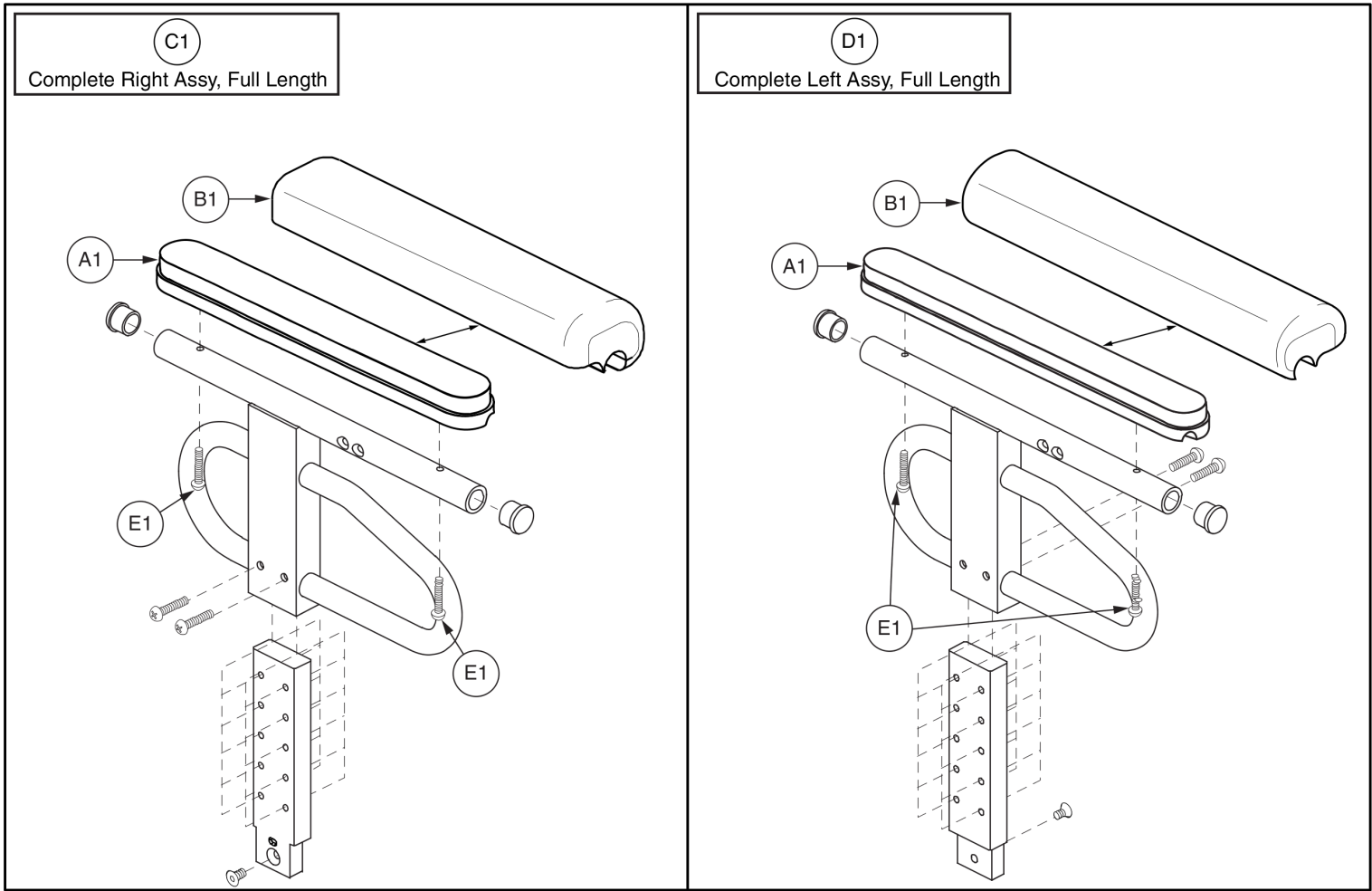


Complete Assemblies include the receiver block, they do not include the armpad.

Item	Part No.	Name	Qty
A1	SETLRAM1115	ARMREST,PAD,SHORT,QUANTUM,V2	1
A2	SETLRAM1116	ARMREST,PAD,LONG,QUANTUM,V2	1
B1	SETLRAM1164	ARMPAD,ASSY,WATERFALL,BLACK,9", DESK LENGTH	1
B2	SETLRAM1165	ARMPAD,ASSY,WATERFALL,BLACK,14", FULL LENGTH	1
C1	FRMASMB9985	ARMREST,HD REMOVABLE,8"H-12"H,BARIATRIC,STEEL,DESK LENGTH,RIGHT	1
D1	FRMASMB9982	ARMREST,HD REMOVABLE,8"H-12"H,BARIATRIC,STEEL,FULL LENGTH,LEFT	1
E1	SCRASBH1053	SCREW,BHSCS,BLACK ZINC,10-32 X 1.25"	2
F1	FRMASMB6384	RECEIVER BLOCK,W/DIE CAST LEVER & STOP BLOCK,RIGHT/LEFT	1

2.1. 8"-12" Height HD Removeable Armrests

*** Individual components are not available for replacement. The entire assembly must be purchased. ***

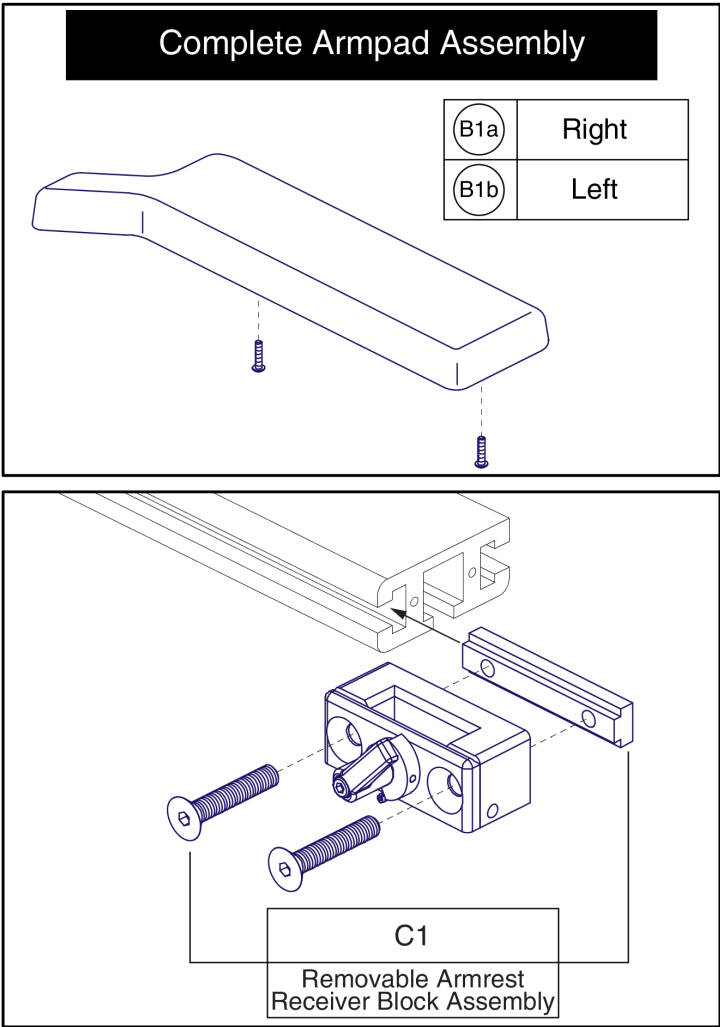
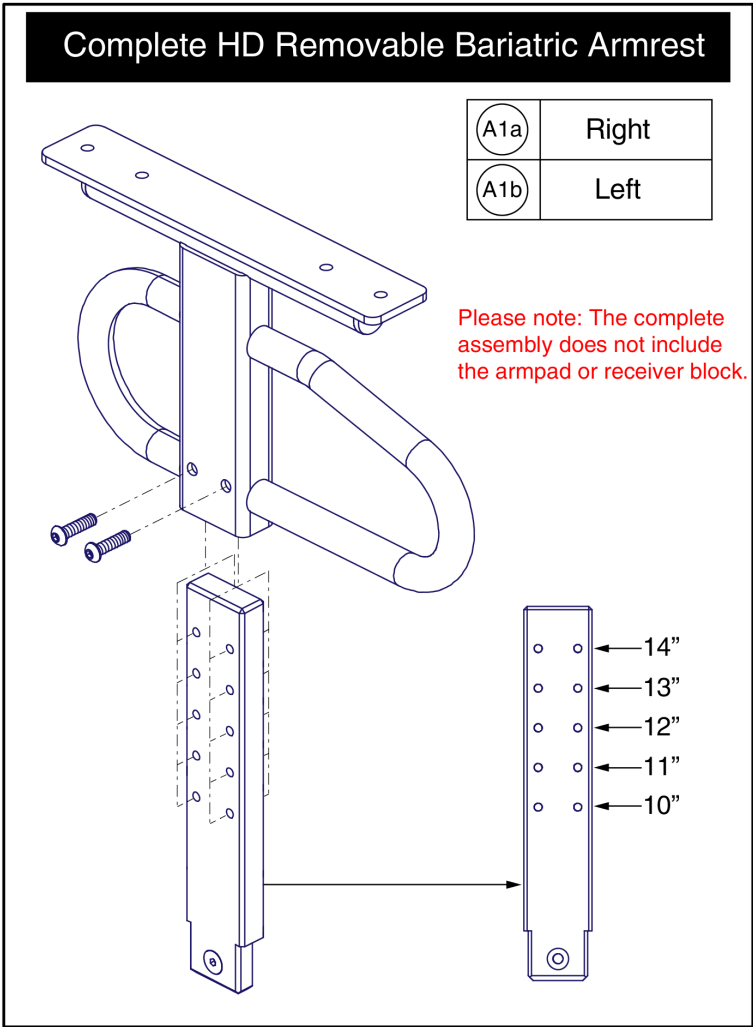


Complete Assemblies include the receiver block, they do not include the armpad.

Item	Part No.	Name	Qty
A1	SETLRAM1116	ARMREST,PAD,LONG,QUANTUM,V2	1
B1	SETLRAM1165	ARMPAD,ASSY,WATERFALL,BLACK,14", FULL LENGTH	1
C1	FRMASMB9983	ARMREST,HD REMOVABLE,8"H-12"H,BARIATRIC,STEEL,FULL LENGTH,RIGHT	1
D1	FRMASMB9982	ARMREST,HD REMOVABLE,8"H-12"H,BARIATRIC,STEEL,FULL LENGTH,LEFT	1
E1	SCRASBH1053	SCREW,BHSCS,BLACK ZINC,10-32 X 1.25"	2
F1	FRMASMB6384	RECEIVER BLOCK,W/DIE CAST LEVER & STOP BLOCK,RIGHT/LEFT	1

2.2. 10"-14" Height HD Removeable Armrests

*** Individual components are not available for replacement. The entire assembly must be purchased. ***



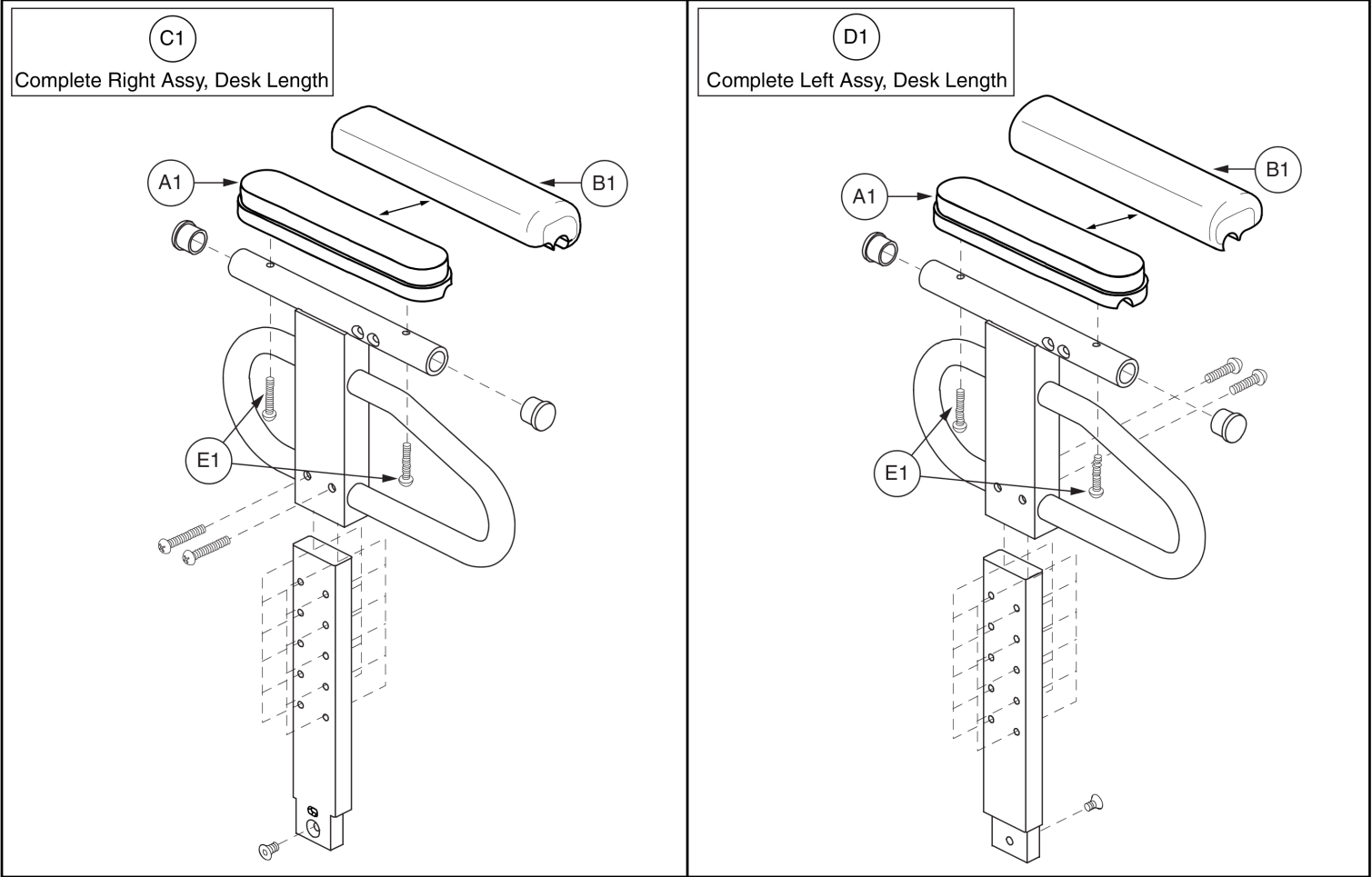
10"-14", Left / Right, Flat Armpad, Bariatric



Item	Part No.	Name	Qty
A1a	FRMASMB6556	ARMREST,ASSY,HD REMOVABLE,10"H-14"H,BARIATRIC,RIGHT,D-1356-026	1
A1b	FRMASMB6555	ARMREST,ASSY,HD REMOVABLE,10"H-14"H,BARIATRIC,LEFT,D-1356-025	1
B1a	UPSASMB1029	ARMPAD,ASSY,MOLDED,BLACK,BARIATRIC W/HARDWARE,RIGHT	1
B1b	UPSASMB1028	ARMPAD,ASSY,MOLDED,BLACK,BARIATRIC W/HARDWARE,LEFT	1
C1	FRMASMB6384	RECEIVER BLOCK,W/DIE CAST LEVER & STOP BLOCK,RIGHT/LEFT	1

2.2. 10"-14" Height HD Removeable Armrests

*** Individual components are not available for replacement. The entire assembly must be purchased. ***



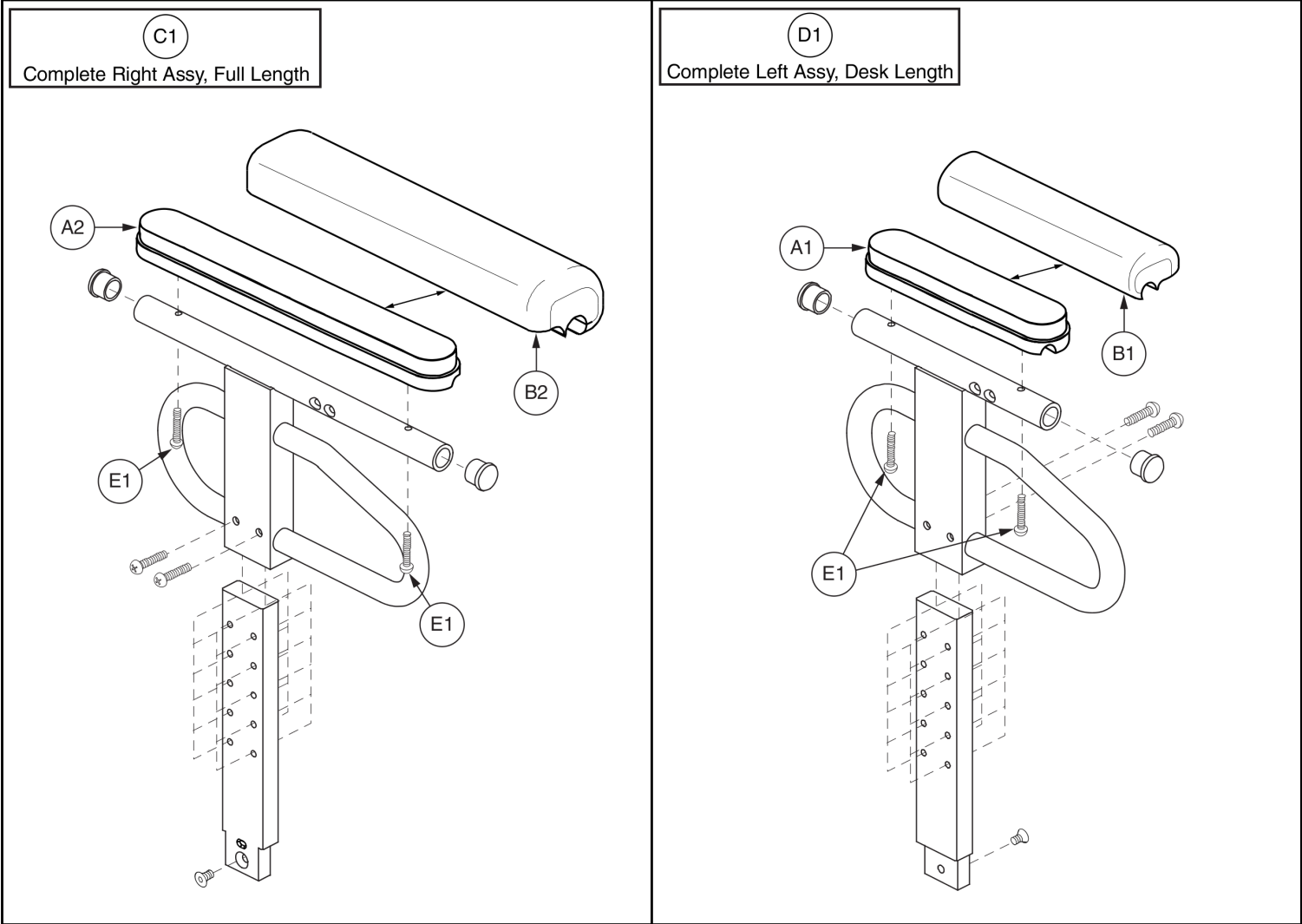
Complete Assemblies include the receiver block, they do not include the armpad.



Item	Part No.	Name	Qty
A1	SETLRAM1115	ARMREST,PAD,SHORT,QUANTUM,V2	1
B1	SETLRAM1164	ARMPAD,ASSY,WATERFALL,BLACK,9", DESK LENGTH	1
C1	FRMASMB9989	ARMREST,HD REMOVABLE,10"H-14"H,BARIATRIC,STEEL,DESK LENGTH,RIGHT	1
D1	FRMASMB9988	ARMREST,HD REMOVABLE,10"H-14"H,BARIATRIC,STEEL,DESK LENGTH,LEFT	1
E1	SCRASBH1053	SCREW,BHSCS,BLACK ZINC,10-32 X 1.25"	2
F1	FRMASMB6384	RECEIVER BLOCK,W/DIE CAST LEVER & STOP BLOCK,RIGHT/LEFT	1

2.2. 10"-14" Height HD Removeable Armrests

*** Individual components are not available for replacement. The entire assembly must be purchased. ***



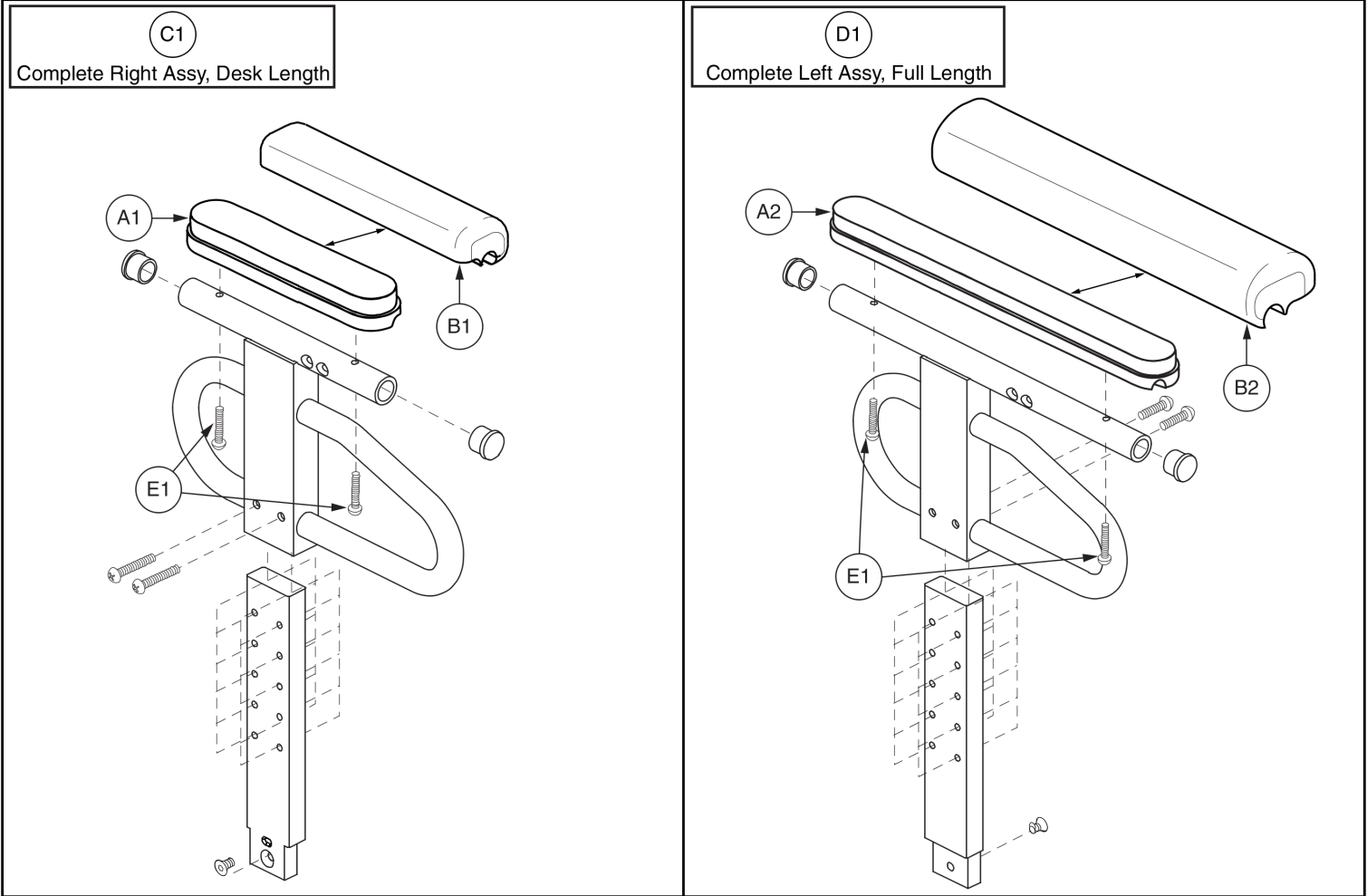
Complete Assemblies include the receiver block, they do not include the armpad.



Item	Part No.	Name	Qty
A1	SETLRAM1115	ARMREST,PAD,SHORT,QUANTUM,V2	1
A2	SETLRAM1116	ARMREST,PAD,LONG,QUANTUM,V2	1
B1	SETLRAM1164	ARMPAD,ASSY,WATERFALL,BLACK,9", DESK LENGTH	1
B2	SETLRAM1165	ARMPAD,ASSY,WATERFALL,BLACK,14", FULL LENGTH	1
C1	FRMASMB9987	ARMREST,HD REMOVABLE,10"H-14"H,BARIATRIC,STEEL,FULL LENGTH,RIGHT	1
D1	FRMASMB9988	ARMREST,HD REMOVABLE,10"H-14"H,BARIATRIC,STEEL,DESK LENGTH,LEFT	1
E1	SCRASBH1053	SCREW,BHSCS,BLACK ZINC,10-32 X 1.25"	2
F1	FRMASMB6384	RECEIVER BLOCK,W/DIE CAST LEVER & STOP BLOCK,RIGHT/LEFT	1

2.2. 10"-14" Height HD Removeable Armrests

*** Individual components are not available for replacement. The entire assembly must be purchased. ***



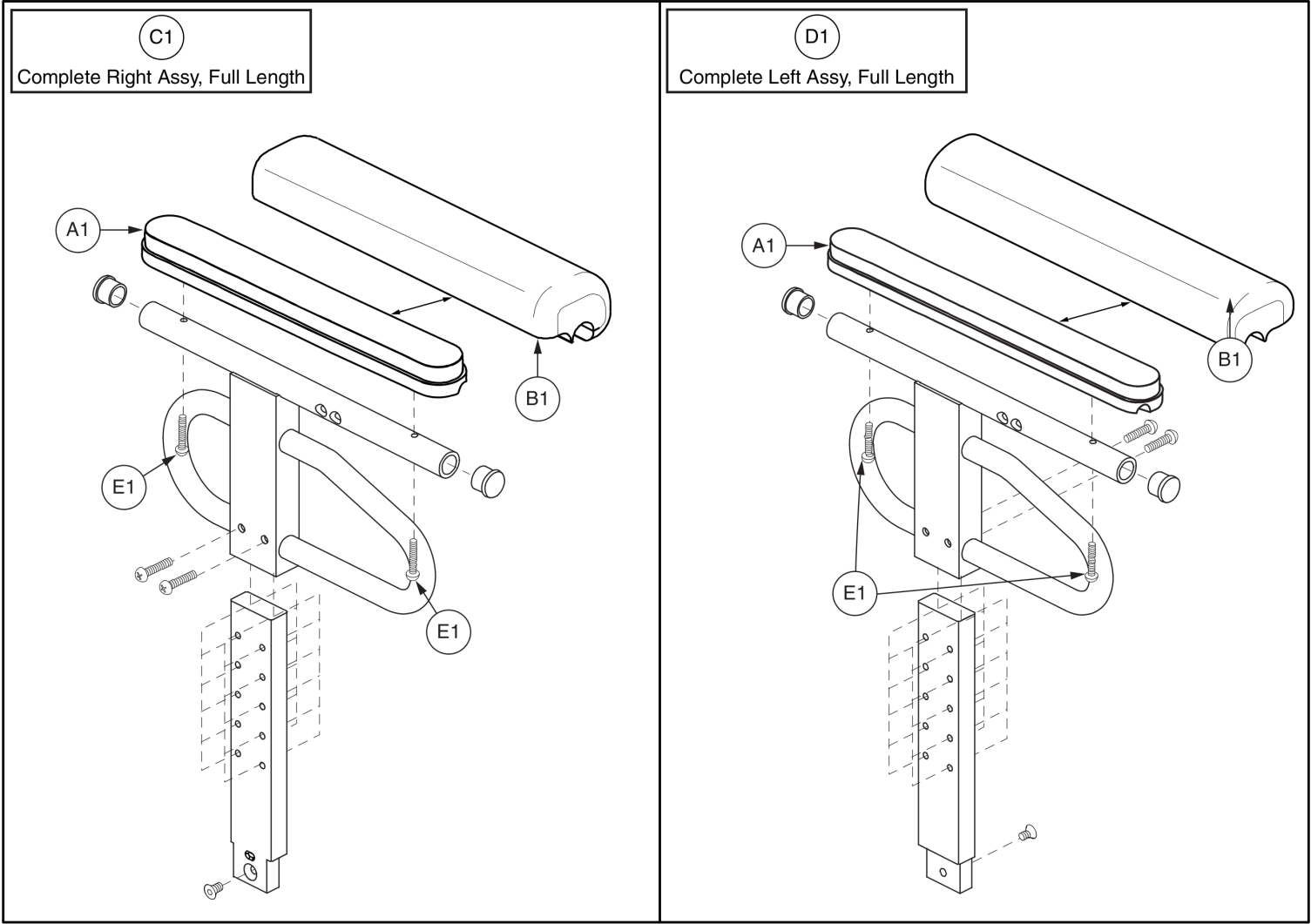
Complete Assemblies include the receiver block, they do not include the armpad.



Item	Part No.	Name	Qty
A1	SETLRAM1115	ARMREST,PAD,SHORT,QUANTUM,V2	1
A2	SETLRAM1116	ARMREST,PAD,LONG,QUANTUM,V2	1
B1	SETLRAM1164	ARMPAD,ASSY,WATERFALL,BLACK,9", DESK LENGTH	1
B2	SETLRAM1165	ARMPAD,ASSY,WATERFALL,BLACK,14", FULL LENGTH	1
C1	FRMASMB9989	ARMREST,HD REMOVABLE,10"H-14"H,BARIATRIC,STEEL,DESK LENGTH,RIGHT	1
D1	FRMASMB9986	ARMREST,HD REMOVABLE,10"H-14"H,BARIATRIC,STEEL,FULL LENGTH,LEFT	1
E1	SCRASBH1053	SCREW,BHSCS,BLACK ZINC,10-32 X 1.25"	2
F1	FRMASMB6384	RECEIVER BLOCK,W/DIE CAST LEVER & STOP BLOCK,RIGHT/LEFT	1

2.2. 10"-14" Height HD Removeable Armrests

*** Individual components are not available for replacement. The entire assembly must be purchased. ***



Complete Assemblies include the receiver block, they do not include the armpad.



Item	Part No.	Name	Qty
A1	SETLRAM1116	ARMREST,PAD,LONG,QUANTUM,V2	1
B1	SETLRAM1165	ARMPAD,ASSY,WATERFALL,BLACK,14", FULL LENGTH	1
C1	FRMASMB9987	ARMREST,HD REMOVABLE,10"H-14"H,BARIATRIC,STEEL,FULL LENGTH,RIGHT	1
D1	FRMASMB9986	ARMREST,HD REMOVABLE,10"H-14"H,BARIATRIC,STEEL,FULL LENGTH,LEFT	1
E1	SCRASBH1053	SCREW,BHSCS,BLACK ZINC,10-32 X 1.25"	2
F1	FRMASMB6384	RECEIVER BLOCK,W/DIE CAST LEVER & STOP BLOCK,RIGHT/LEFT	1

Appendix A:Pages Index

10"-14", Desk Left, Desk Right - HD Removable, Bariatric	13
10"-14", Desk Left, Full Right - HD Removable, Bariatric	15
10"-14", Full Left, Desk Right - HD Removable, Bariatric	17
10"-14", Full Left, Full Right - HD Removable, Bariatric	19
10"-14", Left / Right, Flat Armpad, Bariatric	11
8"-12", Desk Left, Desk Right - HD Removable, Bariatric	3
8"-12", Desk Left, Full Right - HD Removable, Bariatric	5
8"-12", Full Left, Desk Right - HD Removable, Bariatric	7
8"-12", Full Left, Full Right - HD Removable, Bariatric	9
8"-12", Left / Right, Flat Armpad, Bariatric	1

Appendix B:Parts Index

FRMASMB6384	2, 4, 6, 8, 10, 12, 14, 16, 18, 20
FRMASMB6555	12
FRMASMB6556	12
FRMASMB6728	2
FRMASMB6729	2
FRMASMB9982	8, 10
FRMASMB9983	6, 10
FRMASMB9984	4, 6
FRMASMB9985	4, 8
FRMASMB9986	18, 20
FRMASMB9987	16, 20
FRMASMB9988	14, 16
FRMASMB9989	14, 18
SCRASBH1053	4, 6, 8, 10, 14, 16, 18, 20
SETLRAM1115	4, 6, 8, 14, 16, 18
SETLRAM1116	6, 8, 10, 16, 18, 20
SETLRAM1164	4, 6, 8, 14, 16, 18
SETLRAM1165	6, 8, 10, 16, 18, 20
UPSASMB1028	2, 12
UPSASMB1029	2, 12

Illustrated Parts Breakdown

USA - Quantum Rehab

401 York Avenue
Duryea, Pa 18642
www.quantumrehab.com

USA - Pride Mobility Products Corp.

182 Susquehanna Avenue
Exeter, Pa 18643
www.pridemobility.com

Canada

5096 South Service Road
Beamsville, Ontario L0R 1B3
www.pridemobility.ca
www.quantumrehab.com

Australia

20-24 Apollo Drive
Hallam, Victoria 3803
www.pridemobility.com.au
www.quantumrehab.com.au

New Zealand

38 Lansford Crescent
Avondale, Auckland 0600
www.pridemobility.co.nz

UK

32 Wedgwood Road
Bicester, Oxfordshire OX26 4UL
www.pride-mobility.co.uk
www.quantumrehab.co.uk

Netherlands

(Authorised EU Representative)

De Zwaan 3
1601 MS Enkhuizen
www.pridemobility.eu
www.quantumrehab.eu

Italy

Via del Progresso, ang. Via del Lavoro
Loc. Prato della Corte
00065 Fiano Romano (RM)
www.pride-italia.it
www.quantumrehab-italia.it

France

26 Rue Monseigneur Ancel
69800 Saint-Priest
www.pridemobility.fr
www.quantumrehab.fr

Spain

Calle Las Minas Número 67
Polígono Industrial Urtinsa II, de Alcorcón
28923 Madrid

Germany

Hövelrieger Str. 28
33161 Hövelhof
www.pridemobility.de

China

Room 508, Building #4
TianNa Business Zone
No. 500 Jianyun Road
Pudong New Area
Shanghai 201318

